

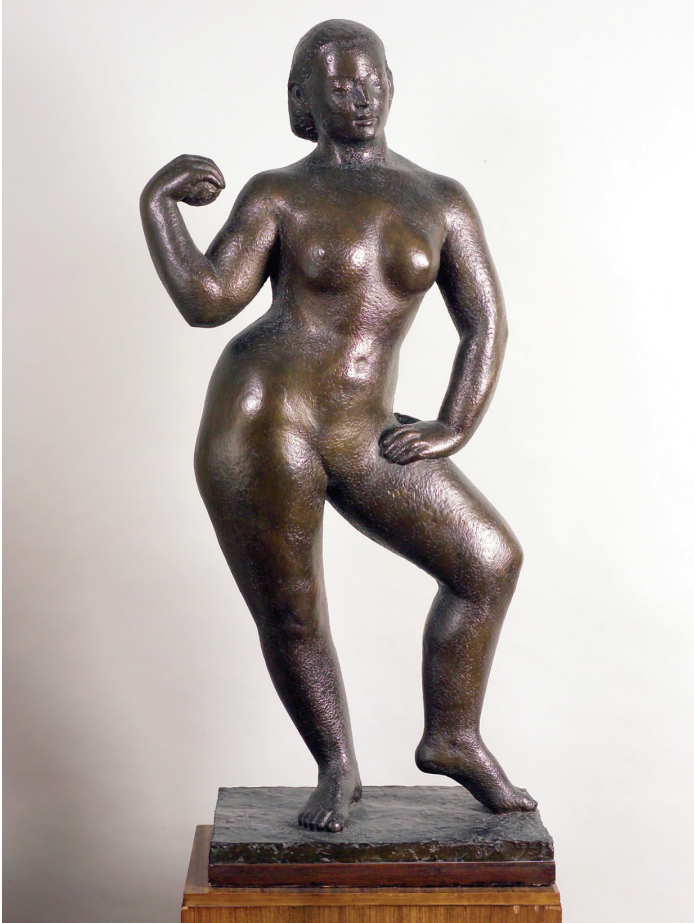


DORICH HOUSE  
MUSEUM

Studio Home of Dora Gordine & Richard Hare

## Cathie Pilkington | Life Room: Working from Home

Studio Residency, 2 June - 28 July 2018



Dorich House Museum launches its annual Studio Residency with artist Cathie Pilkington. A figurative sculptor who constructs uncanny and ambivalent forms, from a wide variety of materials and cultural references, Pilkington's assembled doll-like sculptures are often presented within immersive installations. During her residency, Pilkington will 'occupy' the whole of Dorich House Museum, simultaneously celebrating and trespassing into this uniquely designed private universe. Whilst utilising Dora Gordine's specially designed north-facing studio to create new works, her interventions throughout the house will blur distinctions between public and private, work and domestic life.

Cathie Pilkington comments: 'When I first visited Dorich House and saw Dora's work, I was immediately engaged by the shared interests and stark contrasts in our sculptural practice. This residency opens up a dialogue between two figurative sculptors with a huge interest in domestic and architectural space. This is a remarkable and eccentric studio home designed by a female sculptor for herself and her husband scholar and collector. I am fascinated by the possibilities of working here - making, arranging reconfiguring and inhabiting this privileged, functional and psychic space.'

Cathie Pilkington studied BA Silversmithing at Edinburgh College of Art (1985-91) and completed her MA in Sculpture at the Royal College of Art in 1997. She was elected a Royal Academician in 2014 and became Professor of Sculpture at the Royal Academy Schools in 2016. Exhibitions include V&A Museum of Childhood (2012), Chapter Art Centre Cardiff (2015), Ditchling Museum of Art & Craft, Brighton University Galleries and the Royal Academy Schools Life Room (2017).

The Dorich House Museum Studio Residency is generously supported by a private donor

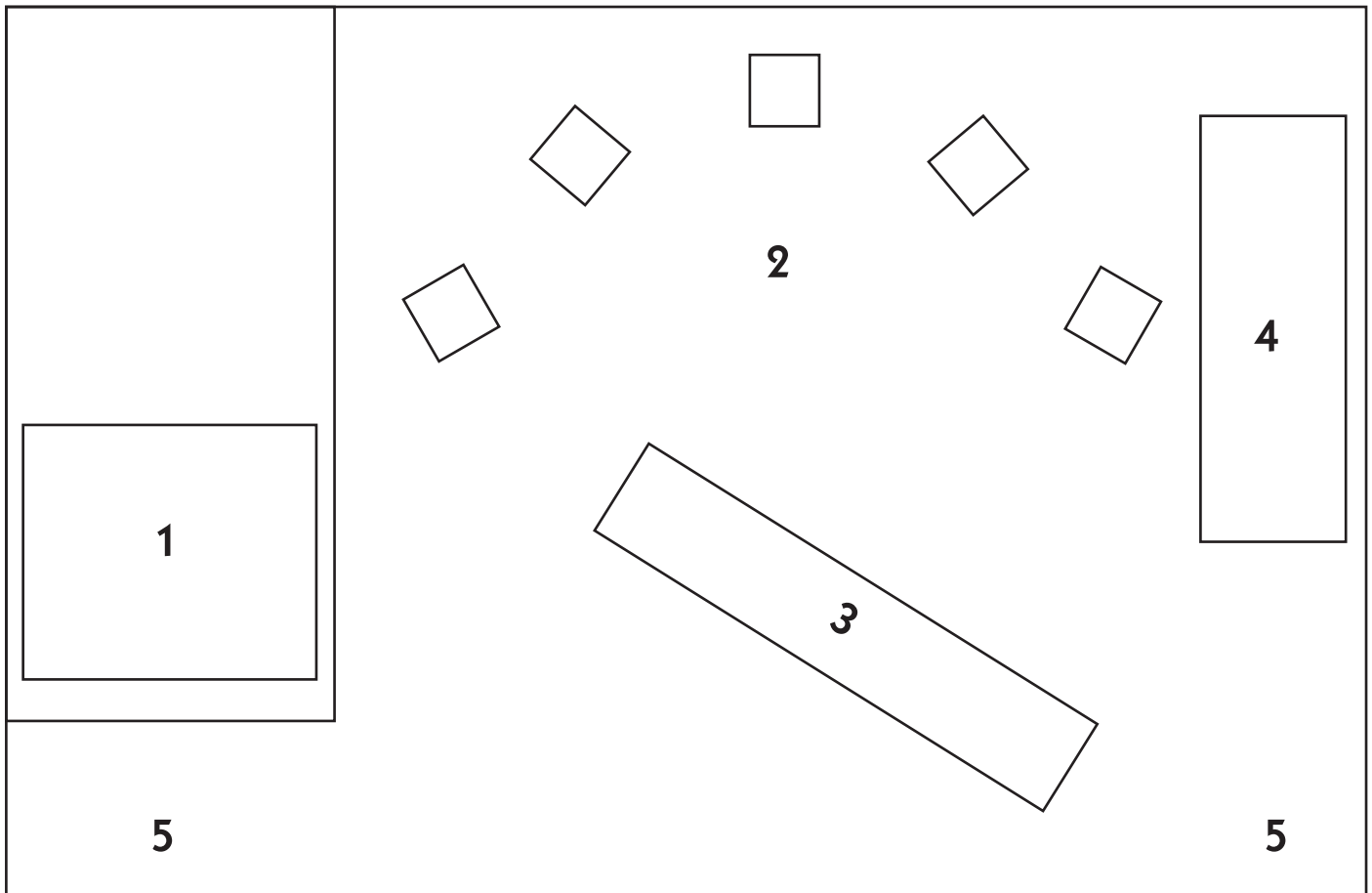
Images: Left - Dora Gordine, Javanese Dancer (1927-28) © Dorich House Museum  
Right - Cathie Pilkington Degas Dolls 3 (2017) Photo: Perou

Kingston University London



# The Modelling Studio | Works by Cathie Pilkington

Other works by Cathie Pilkington displayed throughout the Museum are listed in the Collections Display Guide



## 1 DUMMIES IN A LANDSCAPE

*Dummies in a Landscape*, 2018  
Oil paint on resin, woollen blankets,  
wood, mirror, tree root  
Dora Gordine, Power, 1960  
Plaster relief  
Dimensions variable  
(Stage)

*Cushla*, 2014  
Wood, clay, fabric, paint  
18 x 18cm  
(Stage)

## 2 DEGAS DOLLS

*Degas Dolls 1 - 5*, 2017  
Oil painted on resin, wool, steel  
Each 75 x 60 x 55cm  
(Studio Floor)

## 3 WORKING FROM HOME

*Working from Home*, 2018  
Pegboard, fabric, paper, ribbon, curtain,  
plaster, wool, mirrors, ballrack, oil paint,  
jesmonite, clay  
427 x 251 x 127cm  
(Workspace)

## 4 DOMESTIC FURNITURE

(All Original Unit)

*Reclining Doll*, 2013  
Oil paint on patinated bronze  
43 x 77 x 40cm

*Infanta*, 2013  
Wood, clay, paint  
12 x 18 x 10cm

*Pink Doll*, 2014  
Oil paint on jesmonite  
30 x 14 x 18cm

*The Bride*, 2016  
Clay, fabric, wood, paint  
47 x 25 x 26cm

## 5 WORKS ON PAPER

*Life Room Doll 1 - 4*, 2017  
Ink and oil paint on paper  
78 x 59cm  
(Wall)

*Exquisite Corpse*, 2015  
Collage  
100 x 55cm  
(Wall)

*Cloth Head 3*, 2017  
Digital print with hand colouring  
37 x 54cm  
(Wall)

